

Captivating Cadwell Race Meeting

Driver Briefing Notes (Issued 24/06/26)



This meeting will be held under the National Competition Rules 2026 of Motorsport UK (Edition 3) (incorporating the provisions of the International Sporting Code of the FIA) the Supplementary Regulations and any written instructions the organising Club may issue for the event.

Motorsport UK permit number: 207116 (Interclub).

Issued as part of the official event documents, on behalf of the Motorsport UK Clerks, published on the CSCC official event webpage:

<https://www.classicsportscarclub.co.uk/cadwell>

You must read these notes, together with the detailed Final Instructions and Timetable, **BEFORE** driving on track.

Briefings

If you have never raced at the full Cadwell Park circuit, you must attend a new-to-circuit briefing before you drive on track (see timetable). All other drivers must attend their category briefing as shown in the timetable. Whilst this is scheduled to be held in the far side of the restaurant, if it is busy or too hot we may change and hold this outside the restaurant instead.

Sign-On and Race Licence:

Have you signed on and previously sent us a copy of your 2026 Race Licence once this year?

Track Changes and Features:

There are no known track surface changes made in the last season. Show particular caution if attempting an overtake between the Mountain, through Hall Bends and to the Hairpin. Hall Bends really has just one line and the braking area for the Hairpin is very short. Do not lock up and spear into another car. Equally, the lead car must use its right-hand mirror before turning in for the Hairpin. Contact can occur here and with little run off usually involves finding the barriers.

Timetable:

We will always aim to run up to 30 minutes ahead, carrying any time we gain in the morning through to the afternoon. Look at the CSCC event page bulletins for official updates: <https://www.classicsportscarclub.co.uk/cadwell>

Code 60 and Safety Car:

Motorsport UK is currently not permitting the use of Code 60 in qualifying sessions, but we have received a permit to use the safety car in both qualifying and race sessions at Cadwell..

Pits:

The pits have no shade and the walk back and forth is steep for your pit crew. Please make sure they have suncream, water and ideally a hat. Park parallel and behind another car, don't pull in front and accidentally block a fellow competitor.

Actively Avoid Contact:

Should you have any kind of car-to-car contact, you and your memory card **MUST** report to driver liaison, in the new paddock portacabin.

Track Limits:

These are as per Motorsport UK NCR regulations, but be particularly aware of corner cutting through Hall Bends, exit of Park and exit of Mansfield.

Grid Walk: Adams & Page Swinging 60's 1 (Classes SC, SE, SF, SL, SZ)

Please read your final instructions for the pre-lunchtime arrangements and see the image on the next page.

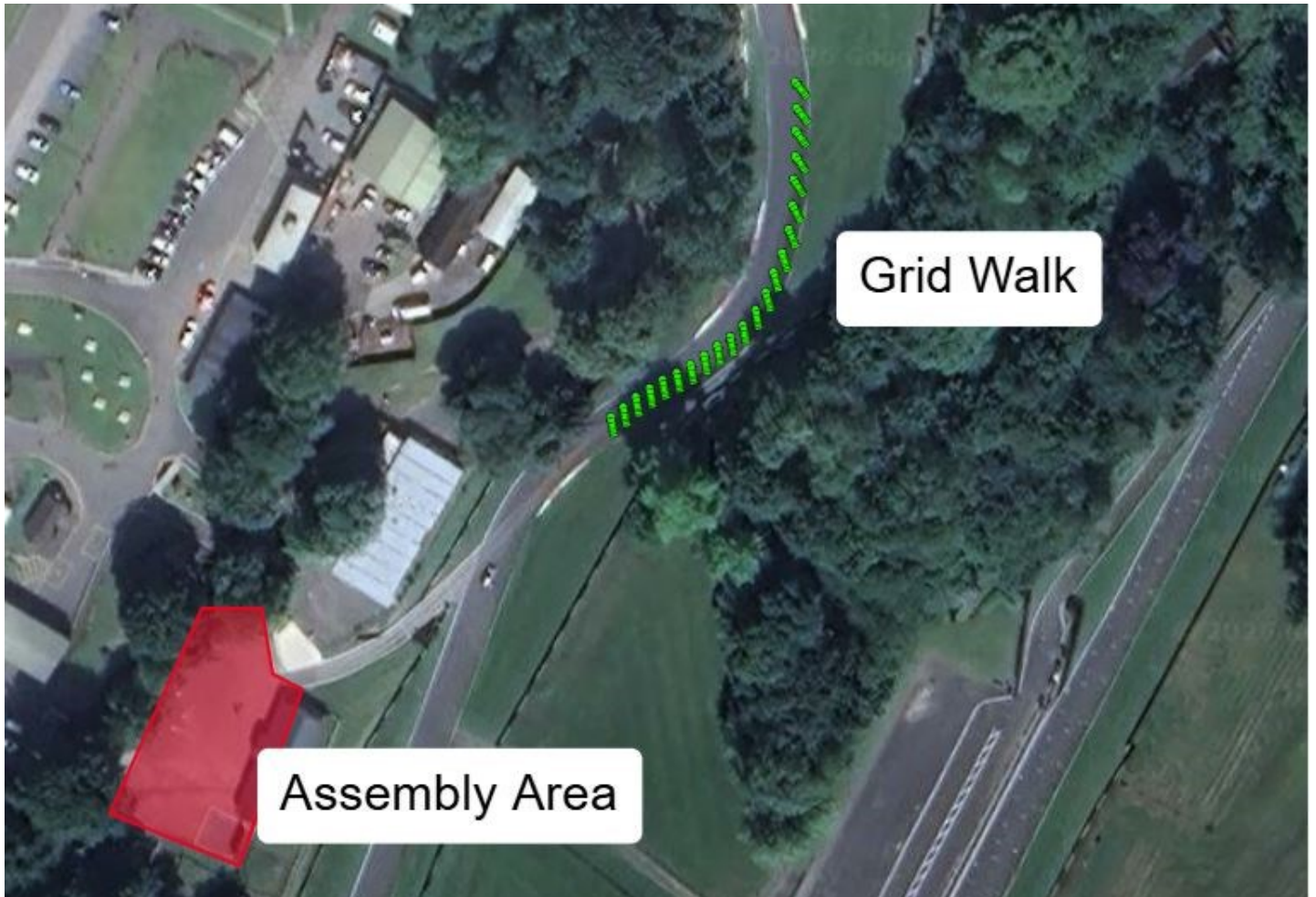


Recognised Club

CSCC, 1 Masons Wharf, Corsham, Wiltshire, SN13 9FY
Email: info@classicsportscarclub.co.uk
Web: www.classicsportscarclub.co.uk
Telephone: 01225 810655

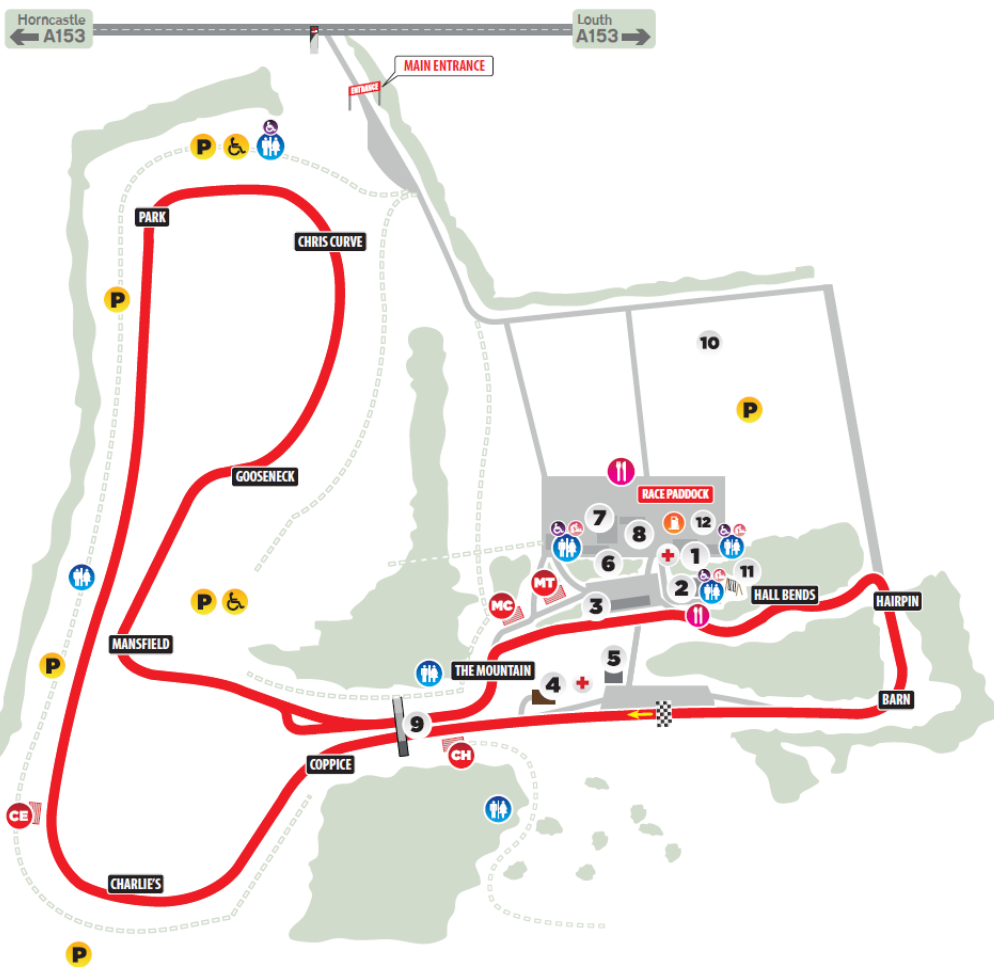
Captivating Cadwell Race Meeting

Driver Briefing Notes (Issued 24/06/26)



Assembly Area

Grid Walk



CADWELL PARK CIRCUIT
 CADWELL PARK CIRCUIT,
 LOUTH, LINCOLNSHIRE LN11 9SE
 TEL: 01507 343248

MAP KEY Not all facilities are available at every event

Parking	Circuit Office
Disabled Parking	The Club House
Toilets	Hospitality
Disabled Toilets	Medical Centre
Baby Changing	Control Tower
Refreshments	Paddock Office
First Aid	Scrutineering
Fuel	Shower Block
Information	Pedestrian Bridge
Footpaths	Football Area
Grandstands	Adventure Playground
	Display Area

VIEWING KEY

Mountain Top Grandstand	Club Hairpin Grandstand
Mountain Crest Grandstand	Charlie's Exit Grandstand (BSB only)



CadwellPark

WWW.CADWELLPARK.CO.UK



Recognised Club

CSCC, 1 Masons Wharf, Corsham, Wiltshire, SN13 9FY
 Email: info@classicsportscarclub.co.uk
 Web: www.classicsportscarclub.co.uk
 Telephone: 01225 810655